

# ADDITIONAL SYRINGE COMPONENTS

## Syringe Locks (stainless steel construction)

### 60cc Syringe Lock (SL-512)

- Fits onto the plunger of the 60cc syringe (toomey or luer)
- Dual supporting spring locks keep the plunger in a straight line
- Increases the plunger base for a better grip

### 30cc Syringe Lock (SL-530)

- Fits 30cc syringes only

### 10cc Syringe Lock (SL-544)

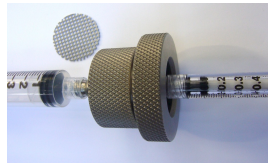
- Fits onto the plunger of the 10cc syringe
- Also fits 20 & 30cc syringes partially extended



## Filter Hub (stainless steel construction)

### Filter Hub - Luer to Luer (FHLL-515)

- Tissue passes through filter disk containing 1mm holes prior to re-injection
- Both include 5 filter disks and 4 "O" rings
- Additional Disks: (FD-517) Includes 5 filter disks and 4 "O" rings



### Filter Hub - Toomey to Toomey (FHTT-516)



## Transfers/Adapters/Stands (stainless steel construction)

### Luer to Luer Transfer (FT-565)

- Transfer tissue from one syringe to another
- Super twist luer lock hub at both ends



### 60T to Luer Transfer Stand (FT-514)

- 60cc Toomey to luer lock hub
- Also serves as a syringe stand for luer lock syringes



### 60T Syringe Stand (SS-518)

- A weighted end cap that permits a full syringe to stand on end for fluid separation



### Luer to Luer Transfer Stand (FT-519)

- Luer to luer lock hub
- Also serves as a syringe stand for luer lock syringes



## 1cc Polycarbonate Syringes

### Clear Polycarbonate Syringe (1CCLLS) (box/100: 1CCLLS-BX)

- Smooth bore allows for consistent flow and excellent feel
- Manufactured by BD and packaged in sterile single packs



## 60cc Toomey Tip Syringes

### TS-520 (box/20: TSB-520)

- Manufactured by Monoject and packaged in sterile single packs



**Grams Medical**

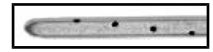
2443 Norse Ave – Costa Mesa, CA 92627  
(949) 548-7337 – FAX (949) 548-1056

sales@gramsmmedical.com – www.gramsmmedical.com

# SuperTwist LuerLock Syringe Cannulae

## LHFI: Fluid Injection Needle

- LHFI ?g x ?cm
- Bullet tip design with cross drilled, spiral pattern at the tip.
- Diameters: 11g (3mm) 13g (2.4mm) 14g (2.1mm) 15g (1.8mm) 16g (1.5mm) 17g (1.4mm)
- Lengths: 14cm, 24cm, 34cm.
- Other lengths available on request.



## Harvesting Cannula

- Standard Harvesting - LHHC 2.7mm x 15cm
- Lambros Micro Harvesting - LMHC 2.7mm x 16cm



Yields Small Cells



Yields Extra Small Cells

## LHM: Micro Cannulae

- Tiger Tip - 2.4mm x ?cm - TT
- Mercedes - 1.5mm, 1.8mm, 2.4mm x ?cm - M
- Mercedes 2 - 1.8mm, 2.4mm x ?cm - M2
- Flat 2 Slot - 1.5mm, 1.8mm, 2.4mm x ?cm - F2

- LHM ?mm x ?cm - ?tip



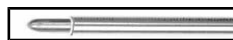
## LHTI: Tissue Injection Needle

- LHTI ?g x ?cm
- Bullet tip design with ramped SIDE EXIT for less injection effort and accurate small increment deposits.
- Diameter: 18g(1.2mm), 17g(1.4mm), 16g(1.5mm), 15g(1.8mm), 14g(2.1mm), 13g(2.4mm), 12g(2.7mm), 11g(3mm)
- Lengths are made to order (diameter & length depend on intended use)



## LHWL: 19g x 7cm Coggins White Liner

- LHWL 19g x 7cm
- A 19g DISTAL END Tissue Injector
- The solid trocar bullet tip gives the needle a superior lateral strength for tunneling.



## Grazer-Grams Pickle Fork

A lysing cannula system used for preparing areas for injecting.

### PF-575 ?mm x ?cm

Design uses a bullet tip injection cannula center for protected tunneling and a "V" notch for controlled cutting in one unit. Cutting notch is exposed by retracting the cannula and indexing the hub.

**AVAILABLE  
DIAMETERS AND LENGTHS:**  
3mm x 24cm    3mm x 34cm  
2.4mm x 14cm    2.4mm x 24cm

### PICKLE FORK TIP DETAIL



TUNNELING AND INJECTING



CUTTING

### PF-570 1.5mm x ?cm

Instrument incorporates a solid trocar center for protected tunneling and a "V" notch for controlled cutting all in one unit. The trocar is removed for injecting tissue without withdrawing the instrument.

- Solid trocar: 1.5mm diameter
- Standard lengths: 10cm, 14cm

